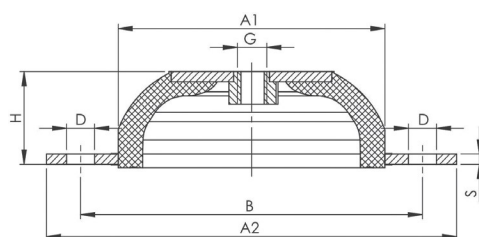


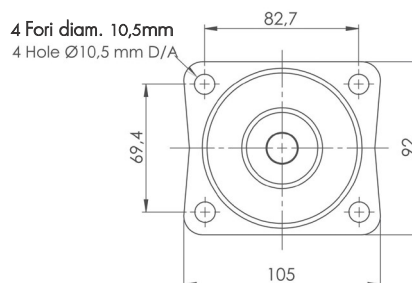
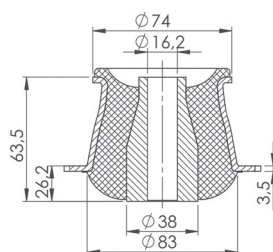
## SUPPORTI A CAMPANA "ASTRA" MACHINE MOUNTS "ASTRA"



<b>MATERIALE</b>	Gomma SBR 60°Sh (±5)	<b>MATERIAL</b>	SBR Rubber 60°Sh (±5)
<b>PARTE METALLICA</b>	Acciaio zincato ACCESSORIATO CON PIASTRA PER EVENTUALE PROTEZIONE SUPERIORE DELLA GOMMA.	<b>METAL PART</b>	Zinc-coated Steel EQUIPPED WITH PLATE FOR EVENTUAL UPPER PROTECTION OF THE RUBBER.
<b>USO</b>	Apparecchi rotanti (ventilatori, compressori, condizionatori d'aria).	<b>USE</b>	Rotating machines (ventilators, compressors, air conditioners).

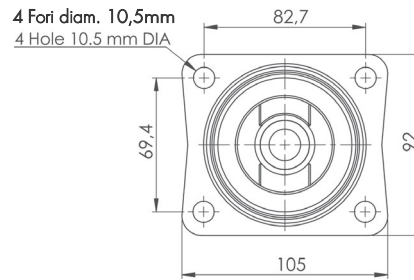
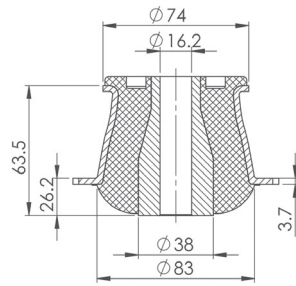
MODELLO/MODEL	A1	A2	H	B	D	S	G
ASTRA 64	40	64	20	52	6,2	2	M6
ASTRA 90	60	90	24	76	6,2	3	M6
ASTRA 120	80	120	27	100	8,2	3	M8
ASTRA 148	100	148	28	124	10,2	3	M10

## SUPPORTI A CONO "KN105" CONICAL BEARINGS "KN105"



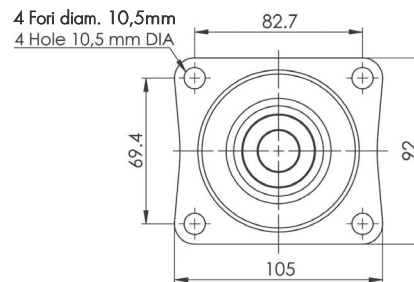
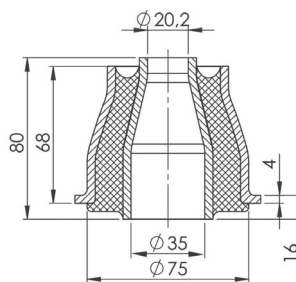
<b>MATERIALE</b>	Gomma SBR 60°Sh (±5)	<b>MATERIAL</b>	SBR Rubber 60°Sh (±5)
<b>PARTE METALLICA</b>	Acciaio zincato	<b>METAL PART</b>	Zinc-coated Steel
<b>USO</b>	Particolarmente adatti per l'utilizzo nei macchinari agricoli e per l'edilizia, per attutire gli urti ed isolare le cabine dalle vibrazioni del motore.	<b>USE</b>	Especially suitable for use in agricultural and construction machinery, to absorb shocks and insulate cabins from engine vibrations.

## SUPPORTI A CONO "KN105/2" CONICAL BEARINGS "KN105/2"



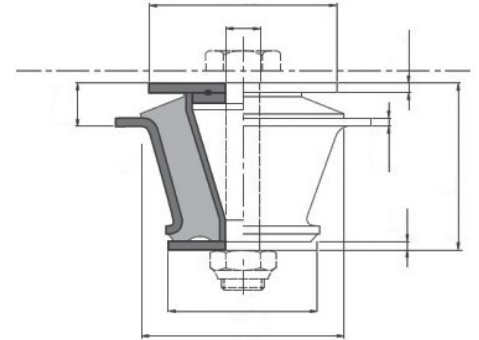
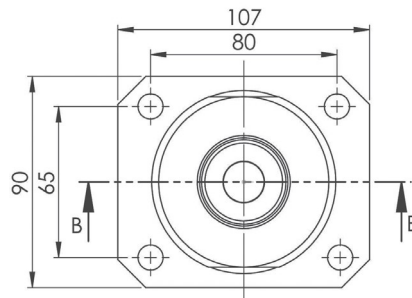
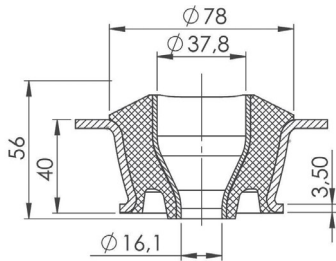
<b>MATERIALE</b>	Gomma SBR 60°Sh (±5)	<b>MATERIAL</b>	SBR Rubber 60°Sh (±5)
<b>PARTE METALLICA</b>	Acciaio zincato	<b>METAL PART</b>	Zinc-coated Steel
<b>USO</b>	Particolarmente adatti per l'utilizzo nei macchinari agricoli e per l'edilizia, per attutire gli urti ed isolare le cabine dalle vibrazioni del motore.	<b>USE</b>	Especially suitable for use in agricultural and construction machinery, to absorb shocks and insulate cabins from engine vibrations.

## SUPPORTI A CONO "KN105/H" CONICAL BEARINGS "KN105/H"



<b>MATERIALE</b>	Gomma SBR 60°Sh (±5)	<b>MATERIAL</b>	SBR Rubber 60°Sh (±5)
<b>PARTE METALLICA</b>	Acciaio zincato	<b>METAL PART</b>	Zinc-coated Steel
<b>USO</b>	Particolarmente adatti per l'utilizzo nei macchinari agricoli e per l'edilizia, per attutire gli urti ed isolare le cabine dalle vibrazioni del motore.	<b>USE</b>	Especially suitable for use in agricultural and construction machinery, to absorb shocks and insulate cabins from engine vibrations.

## SUPPORTI A CONO "KN107" CONICAL BEARINGS "KN107"



**MONTAGGIO CON PIASTRE  
ASSEMBLY WITH PLATES**

<b>MATERIALE</b>	Gomma SBR 60°Sh (±5)	<b>MATERIAL</b>	SBR Rubber 60°Sh (±5)
<b>PARTE METALLICA</b>	Acciaio zincato ACCESSORIATO CON DUE PIASTRE DI SICUREZZA ANTISTRAPPO	<b>METAL PART</b>	Zinc-coated Steel EQUIPPED WITH TWO BREAKAWAY-PROOF PLATES
<b>USO</b>	Particolarmente adatti per l'utilizzo nei macchinari agricoli e per l'edilizia, per attutire gli urti ed isolare le cabine dalle vibrazioni del motore.	<b>USE</b>	Especially suitable for use in agricultural and construction machinery, to absorb shocks and insulate cabins from engine vibrations.