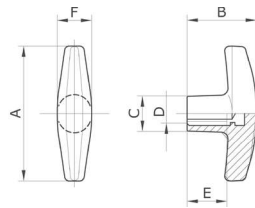


## NOVITÀ NEW

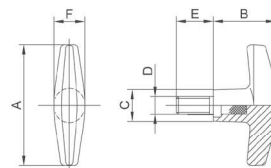
### MANIGLIA TIRANTE MOD.TMT2 CON BOCCOLA FILETTATA CIECA HANDLE



<b>MATERIALE</b>	Termoplastico ad elevata resistenza meccanica.	<b>MATERIAL</b>	Thermoplastic with a high mechanical resistance.
<b>BOCCOLA</b>	Ottone Ot58.	<b>BUSHING</b>	Ot58 brass.
<b>COLORE</b>	Nero. Vasta gamma di colori a richiesta per quantità adeguate	<b>COLOUR</b>	Black. Wide range of colours available for suitable quantities.
<b>CAMPI D'IMPIEGO</b>	Macchine agricole, Autoattrezzatura, Settore Oleodinamico (per es. pompe)	<b>FIELDS OF APPLICATION</b>	Agricultural Machinery, Automotive, Hydraulic Sector (for example pumps)

MODELLO	A	B	C	D	E	F
TMT2/58 M6F	58	30	15	M6	14	14
TMT2/58 M8F	58	30	15	M8	12	14

### MANIGLIA TIRANTE MOD.TMT2 CON VITE HANDLE



<b>MATERIALE</b>	Termoplastico ad elevata resistenza meccanica.	<b>MATERIAL</b>	Thermoplastic with a high mechanical resistance.
<b>VITE</b>	Acciaio Zincopassivato.	<b>SCREW</b>	Zinc passivated steel.
<b>COLORE</b>	Nero. Vasta gamma di colori a richiesta per quantità adeguate	<b>COLOUR</b>	Black. Wide range of colours available for suitable quantities.
<b>CAMPI D'IMPIEGO</b>	Macchine agricole, Autoattrezzatura, Settore Oleodinamico (per es. pompe)	<b>FIELDS OF APPLICATION</b>	Agricultural Machinery, Automotive, Hydraulic Sector (for example pumps)

MODELLO	A	B	C	D	E	F
TMT2/58 M6x30	58	30	15	M6	30	14
TMT2/58 M8x15	58	30	15	M8	15	14
TMT2/58 M8x20	58	30	15	M8	20	14
TMT2/58 M8x25	58	30	15	M8	25	14
TMT2/58 M8x30	58	30	15	M8	30	14